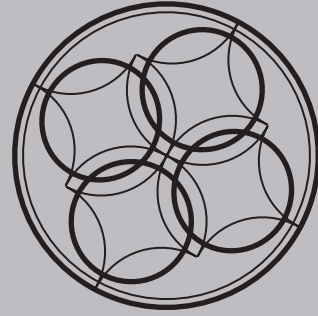


Based on this inspiration and our experience in using leather materials, Cacchu lights was designed to evoke the noble beauty of Japanese armor into a light shade

The lights emanate from carefully crafted openings like sunshine filtering through foliage providing a calm and mystic atmosphere

Please enjoy our lights and the mood of samurai spirituality



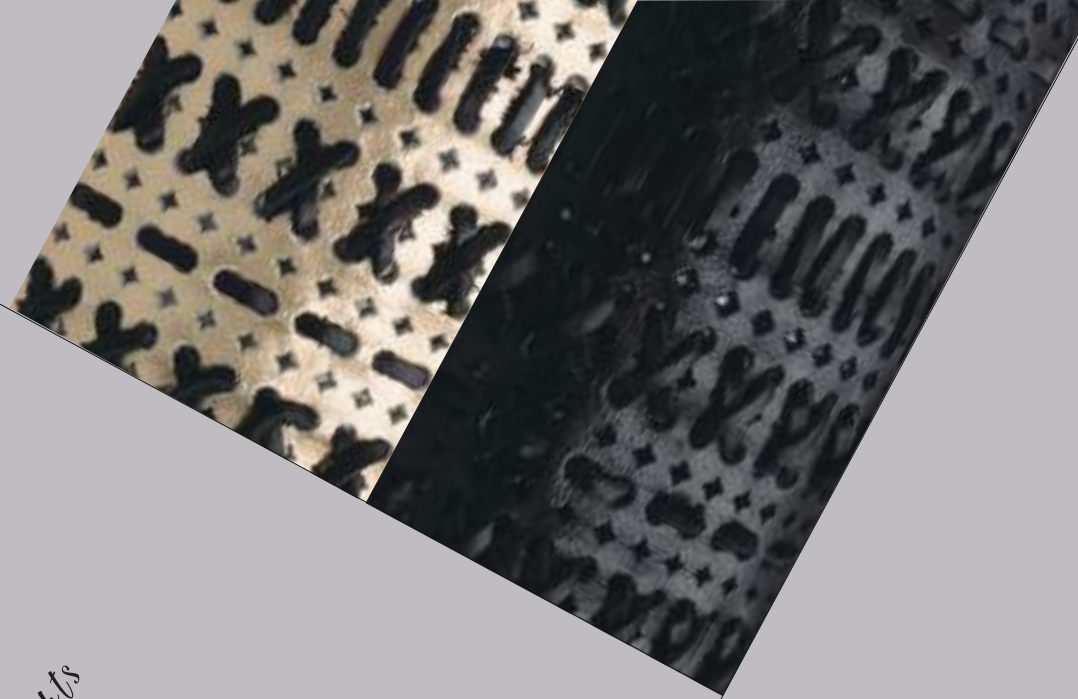
*Cacchu Lights*

Genuine Leather Japanese Ancient Armor Lighting  
**HAND MADE IN JAPAN**

**Connectica**  
Leather Products  
Kyoto, JAPAN

〒600-8139  
京都府京都市下京区西木屋町通正町下がる八王子町 111  
Hachioji-cho 111, Shoumen-Sagaru Nishi-Kiyamachi-dori,  
Shimogyo-ku, Kyoto, 600-8139 KYOTO JAPAN  
Tel: +81(75) 371 0333 / E-mail: info@connectica.jp

**TANIGAWA Co.,Ltd**  
Leather Products  
Kyoto, JAPAN



*Cacchu Lights*

甲冑ライト

Metal armor began to be introduced into Japan in the early 16th century and was mainly fixed with leather or cotton materials

Japanese armor was originally intended to protect samurai commanders but was also used as a show of force and display of power.

For this reason, art and design was often incorporated into the armor



*Regulus*  
CCL-001R

CCL-001R  
Size: Light Parts: 120mm x 120mm (diameter) X 190mm (Depth)  
Base Parts: 168mm (W) X 168mm (H) X 30mm (Depth)  
Weight: 1.0kg

Voltage: 125V  
Light Bulb Type: LED Type Light Bulb Only  
Plug Type: TYPE-A

Material Used: Cow Leather for Light Shade, Base Parts

*Lunge*  
CCL-002L

CCL-002L  
Size: Light Parts: 120mm x 120mm (diameter) X 395mm (Depth)  
Base Parts: 168mm (W) X 168mm (H) X 30mm (Depth)  
Weight: 1.3kg